

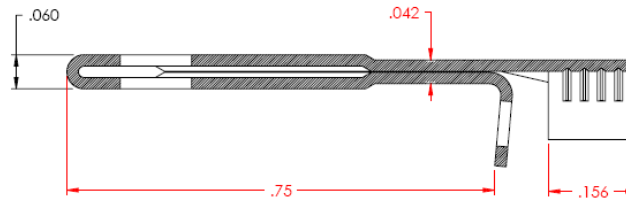
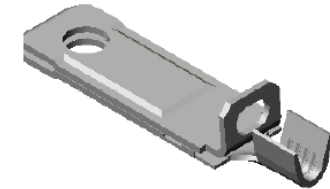
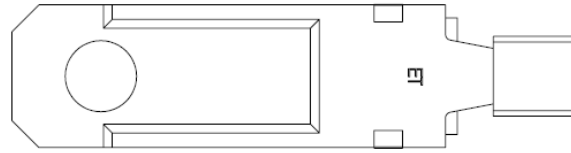


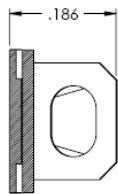
P/C	DESCRIPTION	MAT'L	REWIND		
09867	SH817F*ARB-HB	NOTE 1	YES	X	X

Rev.	Description of Change/ SC#	Date
-	TRANSFER FROM CP TO EP	1-9-04
1	SCN# 102458 SCJ	2-23-04
2	SCN# 102735 SCJ	10-26-04
3	SCN# 102918 SCJ	4-6-05

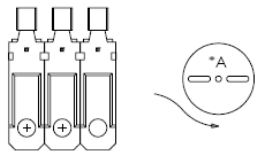
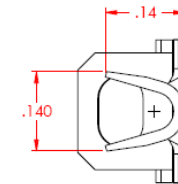
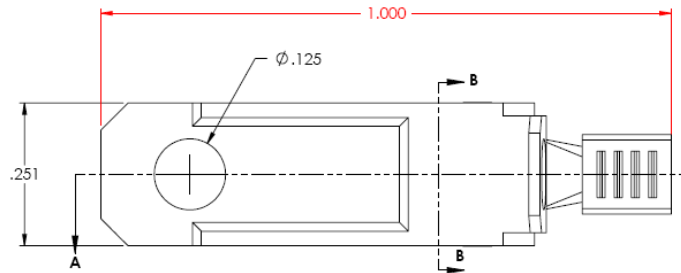
- NOTES:  
 1. MATERIAL: .020 THICK C26000 BRASS; 1/2 HARD  
 ANNEALED TO TEMPER; PER ETCO METAL CODE 00137.  
 2. FOR WINDING AND REWINDING INSTRUCTIONS SEE WI-09-10-8.  
 3. WIRE RANGE: #14-#18 AWG.



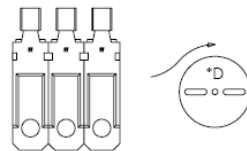
SECTION A-A  
SCALE 6 : 1




SECTION B-B  
SCALE 6 : 1



DIRECTION EXITING TOOL  
EARS DOWN, TO THE BACK  
SEE NOTE 2



DIRECTION EXITING TOOL  
EARS DOWN, TO THE BACK  
SEE NOTE 2

UNCONTROLLED COPY			
	TOOL NO.	Title: <b>PADDED BLADE</b>	
TOLERANCES UNLESS OTHERWISE SPECIFIED	0898	DO NOT SCALE DWG.	Drawn By: S. JOHNSON
INCHES: XX - $\pm .030$ XXX - $\pm .015$		Chk'd/App'd By:	Date: 1-9-04
ANGLES - $\pm 5^\circ$		Scale: 6X	Size: C
<b>SH817F</b>			