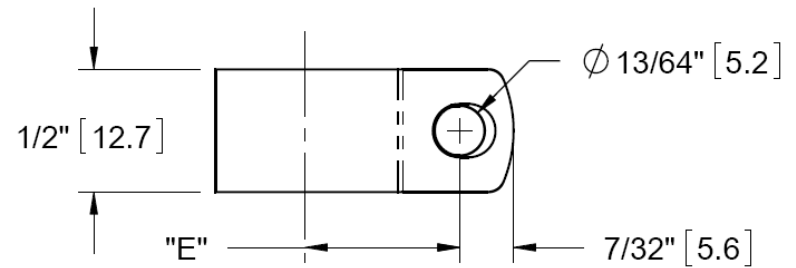


"D" HOLDING DIA.	"E" REF.
1/8 [3.2]	21/64 [8.3]
3/16 [4.8]	25/64 [9.9]
1/4 [6.4]	27/64 [10.7]
.23 [5.8]	27/64 [10.7]
5/16 [7.9]	29/64 [11.5]
3/8 [9.5]	31/64 [12.3]
7/16 [11.1]	17/32 [13.5]
1/2 [12.7]	9/16 [14.3]
9/16 [14.3]	19/32 [15]
5/8 [15.9]	5/8 [15.9]
11/16 [17.5]	21/32 [16.6]
3/4 [19.1]	49/64 [19.5]
7/8 [22.2]	13/16 [20.6]
1 [25.4]	29/32 [23]
1-1/8 [28.6]	31/32 [24.6]



NOTE: MATERIAL: NYLON 6/6 UL 94 V-2, UV STABILIZED

